



户外机柜专用空调器

2000W 2500W



产品简介

Product Introduction

- ◇ 广泛应用于户外通讯机柜、电池柜、电气柜、工业控制柜等需散热场合
This series product can be widely deployed for enclosed area climate control such like wireless communication cabinet, battery cabinet, Industry control cabinet etc.
- ◇ 内、外循环 IP55 防护等级，防尘、防水，可完全安装于室外
The internal and external interface of product is IP 55 level protected to avoid moisture, dust, water penetrating Into Inside of enclosure. Inside electronics equipment Is completely well protected.
- ◇ 适合高温工况，55°C/55°C环境下可不间断运行
Applicable for severe ambient environment, such like high temperature, high humidity, high corrosion atmosphere.

设计专长

Product Design Feature

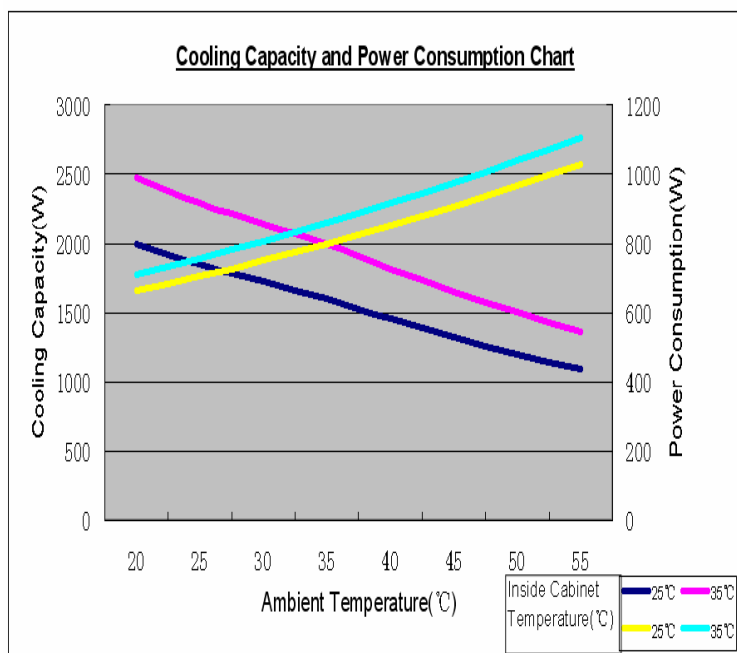
- ◇ 低除湿制冷功能
Less dehumidifying comparing traditional aircon.
- ◇ R134a 环保制冷剂
Environmental friendly refrigerant such like R134A
- ◇ 外循环风机压力控制，适合低温环境温度下制冷
Heat pressure smart control function to enable active cooling works In winter season
- ◇ 多重保护功能
Completely safety protected accordingly UL, EN, CCC norms
- ◇ 报警输出功能
Alarming output to monitoring system
- ◇ 可视化人机界面
Interchangeable and visual display service adapter

标准配置

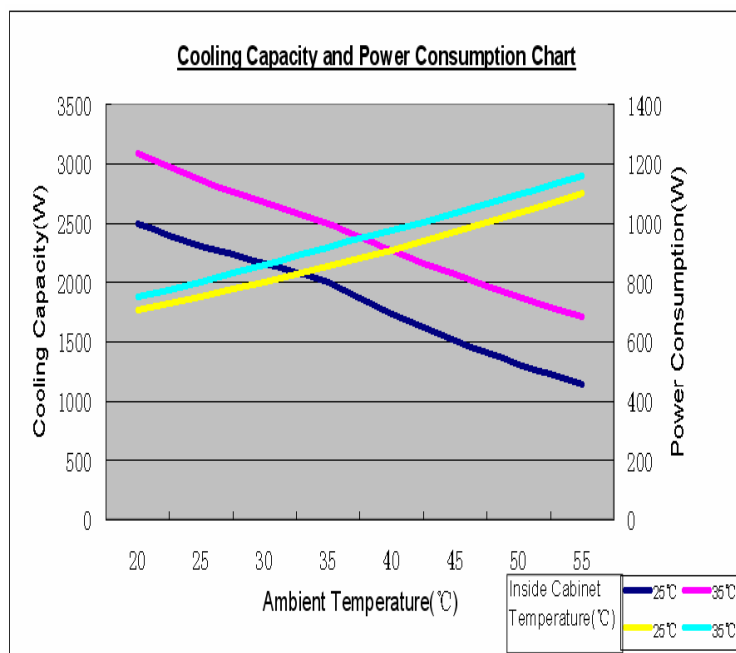
Product		JGL-2000A	JGL-2500A
Dimensions, Weight & Mount			
External Dimensions (H x W x D)	MM	1170x470x220	1170x470x220
Weight	KG	50	50
Mounting Method		Door/Side/Half embedded	Door/Side/Half embedded
Application		Outdoor	Outdoor
Environmental Protection & Performance			
Working Temperature Range (no heater)	°C	-15 to +55	-15 to +55
Working Temperature Range (with heater)	°C	-40 to +55	-40 to +55
Noise Level	dB(A)	69	69
Protection from Dust, Water and Wind Driven Rain	IP	IP55	IP55
Refrigerant		R134A	R134A
CE & RoHS Compliant		YES	YES
Cooling Capacity & Operational Data			
Cooling Capacity@L35 / L35	W	2000	2500
Internal Airflow	M ³ /h	650	700
Power Consumption, Air Condition mode at L35/L35	W	860	920
Power Consumption, Air Condition mode at L35/L55	W	1100	1150
Power, Frequency & Range			
Input Voltage	VAC	AC230V ± 10%	AC230V ± 10%
Frequency	HZ	50/60Hz	50/60Hz
Key Components			
Controller		Smart Controller	Smart Controller
Fans		EBM	EBM
Compressor		Rotary	Rotary
Heater (Optional)	W	800	800
Color (Optional)	Color	RAL7035	RAL7035

冷却性能

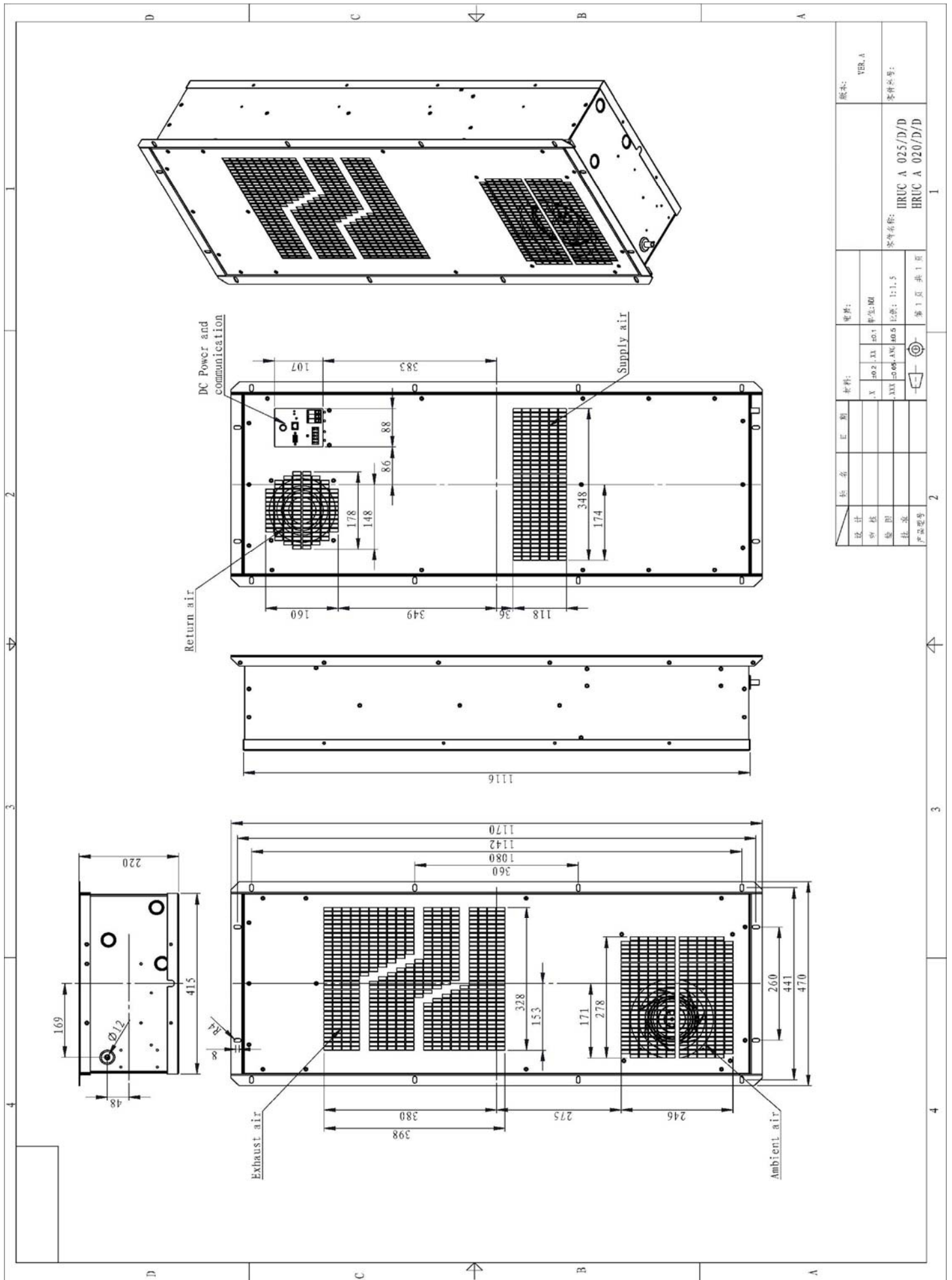
JGL-2000A



JGL-2500A

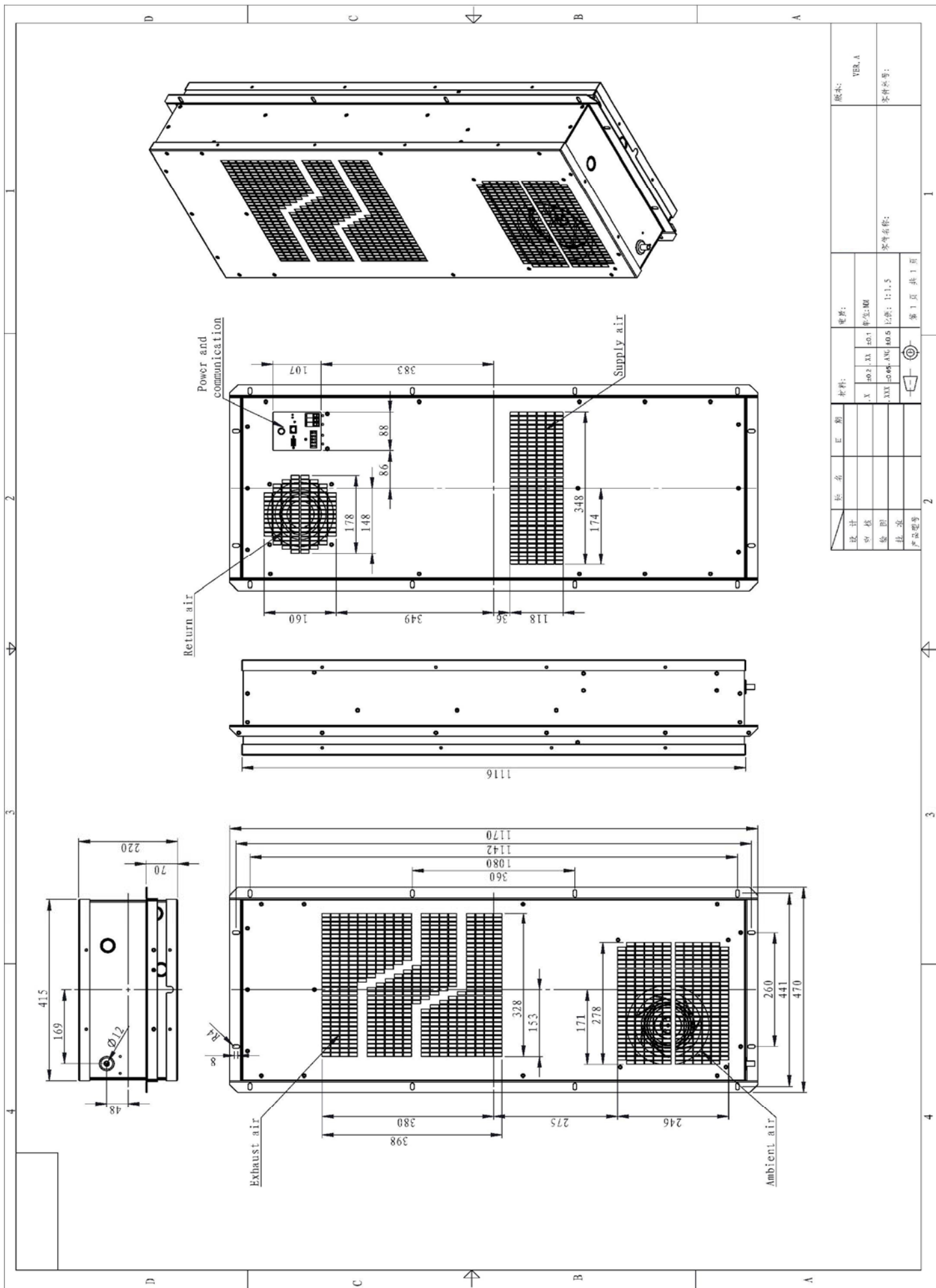


嵌入式安装



设计	审核	制图	标注	产品型号	名称	日期	材料	规格	版本
									VER. A
									零件号:
									HRUC A 025/D/D
									HRUC A 020/D/D
									零件名称:
									HRUC A 025/D/D
									HRUC A 020/D/D
									比例: 1:1.5
									第 1 页 共 1 页

半嵌安装



设计	审核	材料	版本: VER. A
制图	XX	XX	零件号:
批准	XX	XX	零件名称:
产品型号	XX	XX	第 1 页 共 1 页